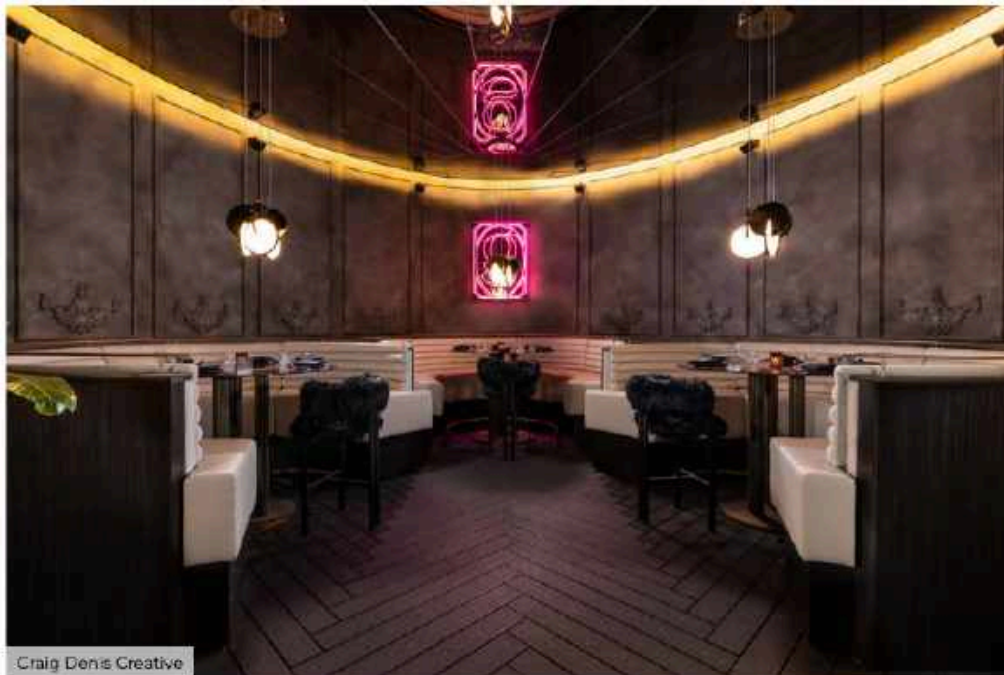


* SECRET MIAMI

You Can Now Have Dinner Atop Club E11EVEN At Its Newest Rooftop Restaurant

With gorgeous interiors and culinary creations, the glamorous Giselle Miami is your one-stop spot for pre-gaming fun or after-party dining.



Miami is [no stranger to rooftop restaurants](#) — especially during this time of year. We've got tons scattered across the city, from Juvia in Miami Beach to Cebada in the Gables. But Giselle Miami, a collaboration between E11EVEN and The Restaurant People, is taking rooftops to the next level...

Perched atop the after hours nightclub, Giselle serves as a lively addition to the city's growing culinary scene, merging Asian, Mediterranean and French-inspired flavors.

In order to access it, a private elevator takes guests up to the main entrance, where they are led through a luminous mosaic-tiled tunnel that goes into the restaurant's foyer.



Giselle's alluring design, spearheaded by South Africa-based interior architect Tristan du Plessis, contains a mix of high-style, modern elegance, and custom-made decor from all around the world.



Find yourself at the central dining area, where you can indulge on items like bluefin tuna truffle cones topped with 24-karat gold leaf or a flaming Australian wagyu tomahawk among other extravagant offerings. Bordered by lush greenery and marble scaffolding, the space accommodates parties of any size — from cozy tables for two to larger seatings up to 10.

The 14-seat marble-adorned bar not only offers drinks like the Instagrammable made-for-two Head Over Heels cocktail with E11EVEN Vodka, sparkling rosé, raspberry and lemongrass, served in a glass stiletto — it also features a creative digital art display!



Photo Courtesy of Giselle

The wall behind the bar showcases the work of local filmmaker and producer Frank Kelly, who was tapped to produce a custom short series of the space.

Another eye-catching detail at the restaurant concept is a double-sided neon sign that reads, "I'll be here, if by chance, you'll be here too."



Craig Denis Creative

Extending from the bar is Giselle's lounge/terrace area, set along Miami's evening skyline. A retractable roof also spans the entirety of the indoor-outdoor restaurant, allowing for a truly dynamic dining experience — rain or shine.

If you think that's all, think again. Step in to the restaurant's so-called "crown jewel," the awe-striking Dream Room. It's a main dining room engulfed with French lace and elaborate baroque detailing, while the walls and ceilings are ornamented in 3D wood-carved architectural detailings.



Craig Denis Creative

You can find Giselle at **15 NE 11 St., Miami, FL 33132**. Opening hours of operation are **Wednesday to Sunday, from 6 p.m. until late**. For reservations and more information, [click here](#) to visit their website.